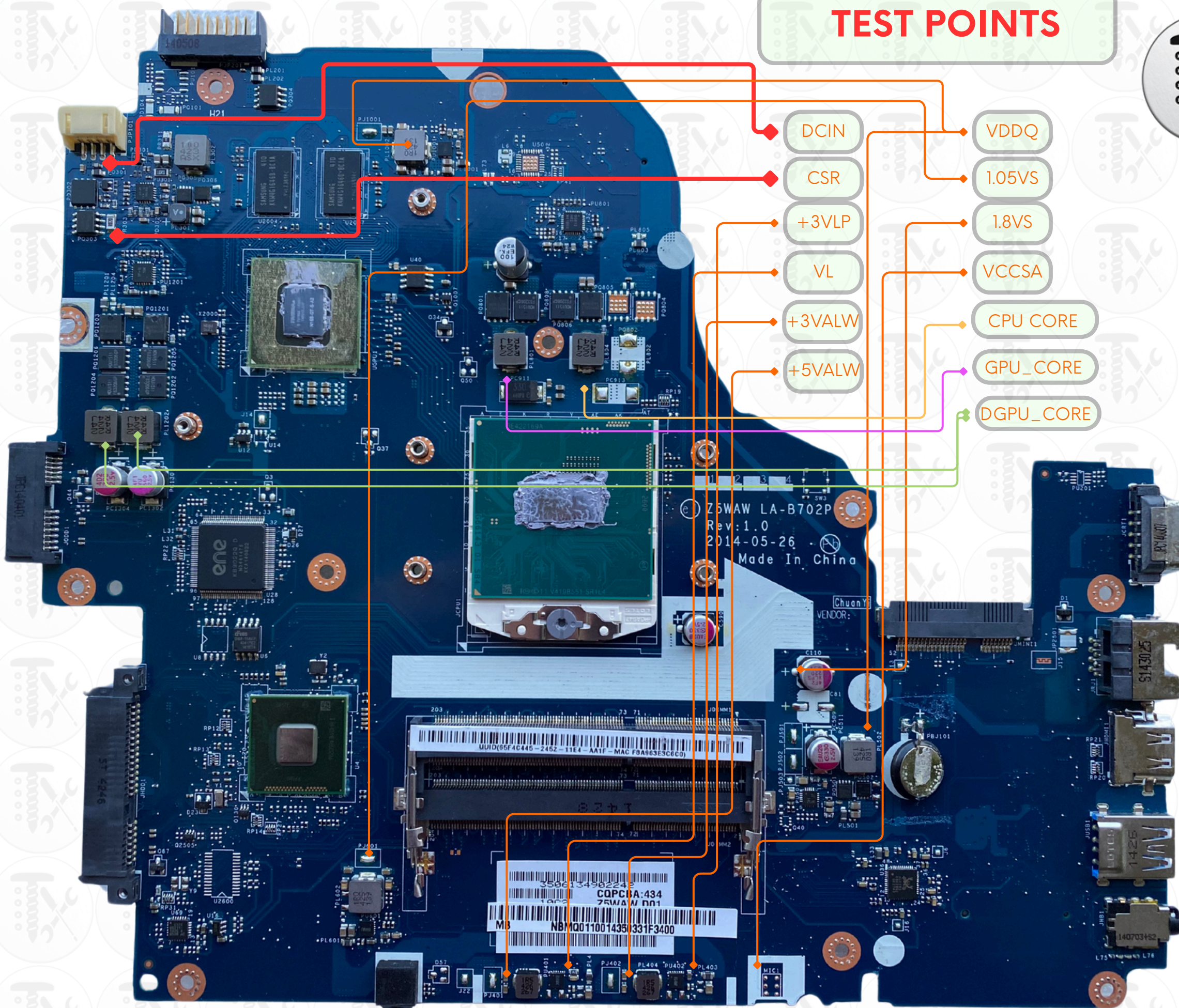


## TEST POINTS



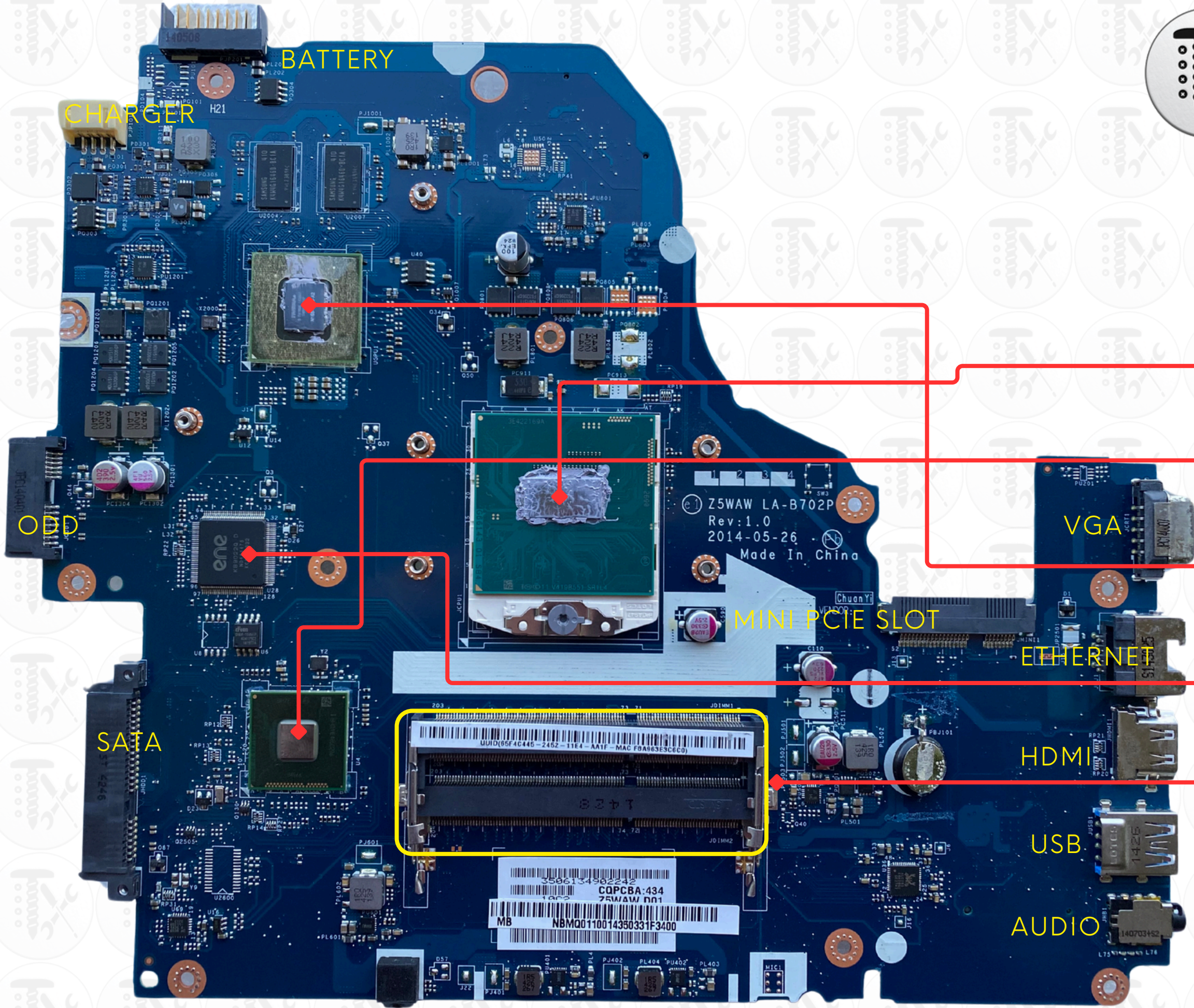
# TRAINING OUTLINE



- Day 0 - WELCOME PARTICIPANTS MEET AND GREET
- Day 1 - Motherboard Parts / Test Points / Diagnostic Methods / Multi-Tester
- Day 1 - Components / Capacitor / Mosfet
- Day 2 - Components : Resistor / Diode
- Day 3 - Components : Transistor
- Day 4 - Basic Schematic Reading / Boardviewer
- Day 5 - DCIN Section ( HPB / NVDC / TYPE C)
- Day 6 - STANBY VOLTAGES - 3V AND 5V Section
- Day 7 - SUSPEND VOLTAGES : +3VS & +5VS
- Day 8 - SIO TRIGGERING SIGNALS
- Day 9 - POWER ON VOLTAGES: VDDQ, 1.8V, 1.05V
- Day 10- CPU CORE VOLTAGES
- Day 11- LVDS /EDP SIGNALS
- Day 12- BIOS EDITING ( BASIC )
- Day 13- BIOS EDITING HEX EDITING
- Day 14- BIOS EDITING FLASH IMAGE TOOL
- Day 15- BIOS EDITING EXTRACTION, UEFI, INJECTOR



# MOTHERBOARD ARCHITECTURE



## MAIN CHIPSETS

**PROCESSOR**  
HASWELL (4TH GEN, 2013)

**PCH**  
PERIPHERAL CONTROLLER HUB

**GRAPHICS**  
HASWELL (4TH GEN, 2013)

**MEMORY**  
DIMM (DUAL IN-LINE MEMORY MODULE)

**EC/SIO/KBC**  
SUPER INPUT / OUTPUT CONTROLLER